

STATE OF ARKANSAS
STATE HIGHWAY COMMISSION

FED. DIST. NO.	STATE	FED. AID PROJ. NO.	FISCAL YEAR	SHEET NO.	TOTAL SHEETS
6	ARK.	271-A	1930	1	6

FISCAL YEAR	JOB NO.	SHEET NO.	TOTAL SHEETS
1930	3-126	1	6

INDEX OF SHEETS

Sheet No. 1 Drwg No. 1995 Title Sheet.
" " 2 " " 1996-A Layout Sheet (1 of 2) of Br. No. 899 1/2
" " 3 " " 1997 " " (2 " 2) " " 899 1/2
" " 4 " " 1998-A Details of Raising & Re-decking Br. No. 899 1/2
" " 5 " " 1999 Layout of Br. No. 900
" " 6 " " 2273 Details of Standard 30' R.C.D. Girder on Concrete Pile Bents, 20' Clear Roadway.

Note: Two Federal Aid Marker plates of approved design and furnished by the state to be placed on each bridge.

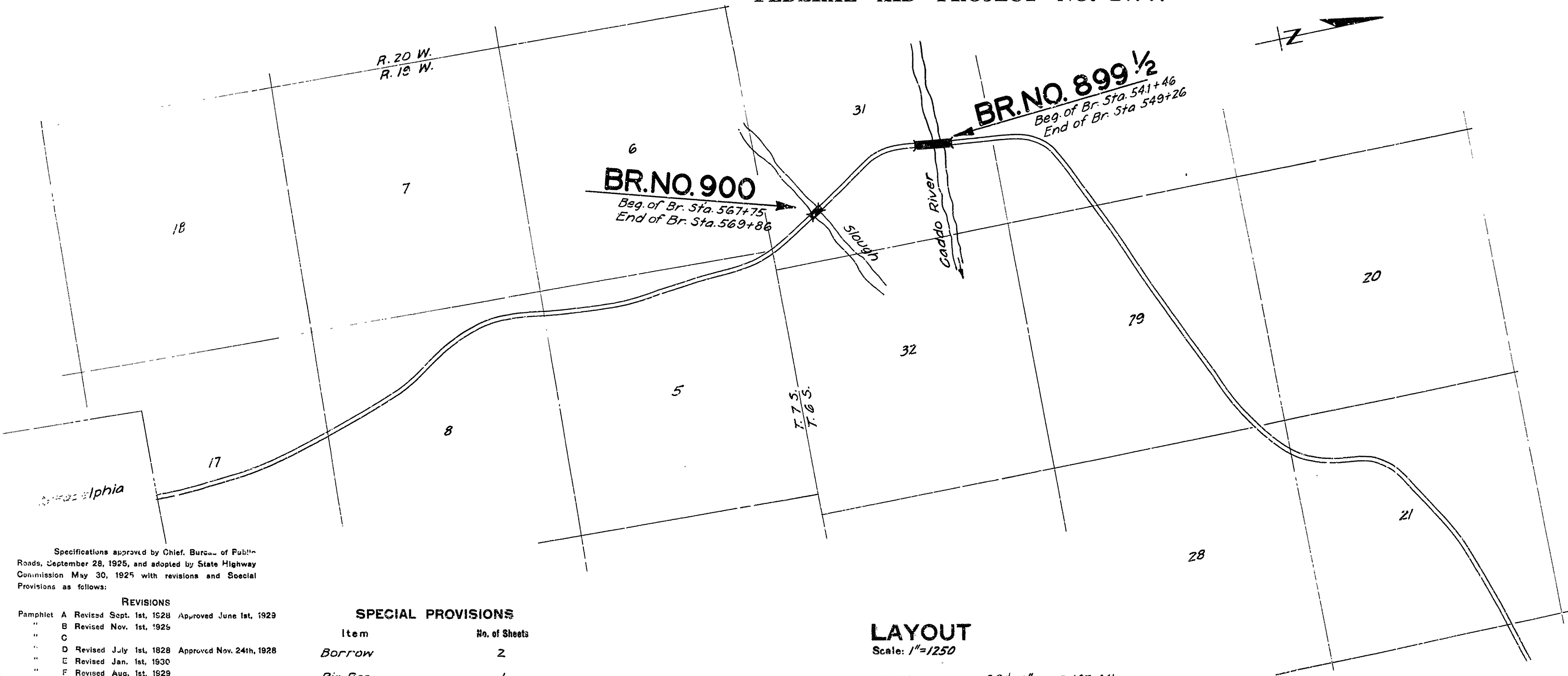
PLAN OF PROPOSED BRIDGES
OVER
CADDO RIVER
CLARK COUNTY

ROUTE 51 SEC. 2
JOB NO 3126
FEDERAL AID PROJECT NO. 271-A

QUANTITIES

Item No.*11 Clearing	1 Acre
" " *12 Earth Excavation	1,120 Cu.Yds.
" " *17 Borrow	9,800 " "
" " 54 " "S" "	Cu.Yds.
" " 55 Reinforcing Steel	1102.05 " "
" " 68 Precast Concrete Piling	276,912 Lbs.
" " 69 Rip Rap	5184 Lin Ft.
" " 74 Conc. Railing for Structures	156 Cu.Yds.
" " *S.P. Repairing Existing Structure	2069 Lin.Ft.
	1 Lump Sum

Note - Items marked thus * are non-participating in Federal Aid



Specifications approved by Chief, Bureau of Public Roads, September 28, 1925, and adopted by State Highway Commission May 30, 1925 with revisions and Special Provisions as follows:

REVISIONS		
Pamphlet	A Revised Sept. 1st, 1928	Approved June 1st, 1929
"	B Revised Nov. 1st, 1925	
"	C	
"	D Revised July 1st, 1928	Approved Nov. 24th, 1928
"	E Revised Jan. 1st, 1930	
"	F Revised Aug. 1st, 1929	
"	G Revised June 1st, 1929	
"	H Revised Jan. 1st, 1930	
"	I	
"	J Revised Jan. 1st, 1928	Approved June 1st, 1929
"	K	
"	L Revised Jan. 1st 1929	Approved June 1st, 1929

SPECIAL PROVISIONS	
Item	No. of Sheets
Borrow	2
Rip Rap	1
Repairing	1
Existing Structure	1
Engineers Office	1

LAYOUT
Scale: 1"=1250'

LENGTH OF PROJECT = 981'-6" = 0.187 MI.
LENGTH OF BRIDGES = 981'-6"
LENGTH OF EMBANKMENT = 627'-6" = 0.118 MI.
LENGTH OF JOB = 1379'-0" = 0.263 MI.

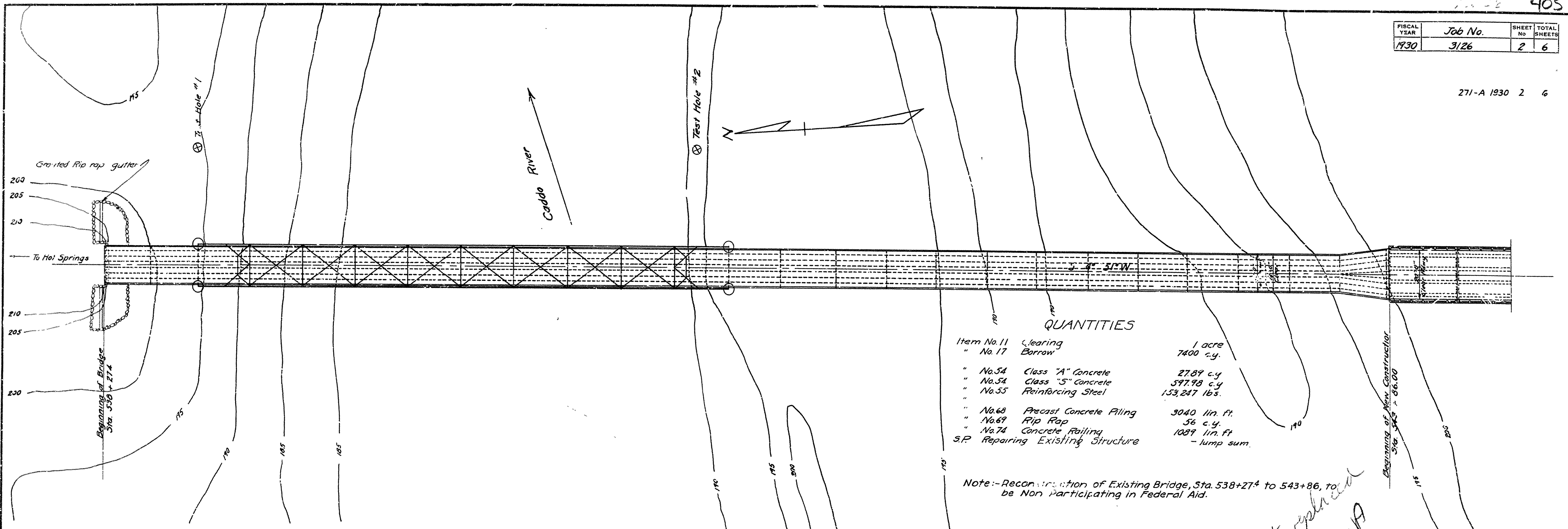
10-29-30
Added Length. 18.

APPROVED
CHIEF ENGINEER - U. S. BUREAU OF PUBLIC ROADS
APPROVED
DISTRICT ENGINEER - U. S. BUREAU OF PUBLIC ROADS
APPROVED
CHIEF - U. S. BUREAU OF PUBLIC ROADS
APPROVED
CLERKMAN - STATE HIGHWAY COMMISSION
APPROVED
STATE HIGHWAY ENGINEER

BRIDGE ENGINEER

BRIDGES NO. 899 1/2 & 900

DRAWING No. 1995

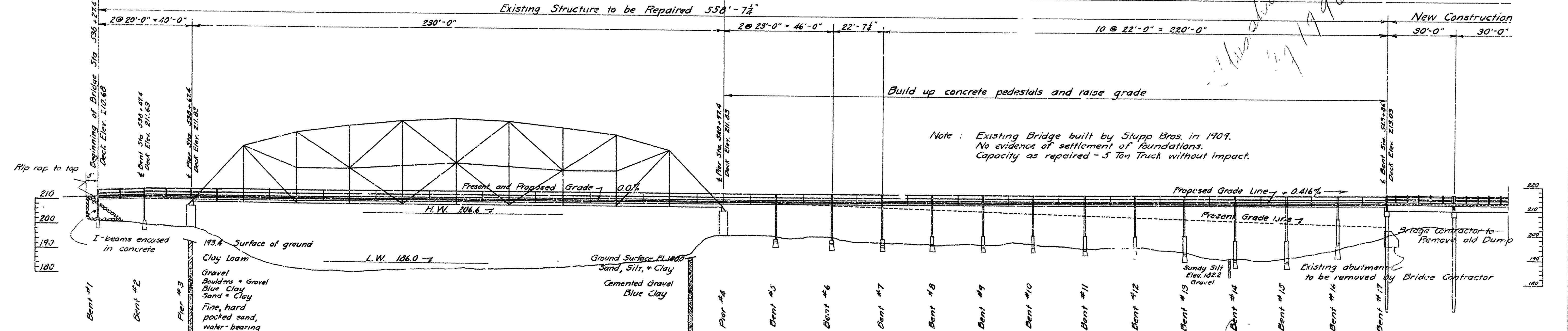


QUANTITIES

Item No. 11	Clearing	1 acre
" No. 17	Borrow	7400 c.y.
" No. 54	Class "A" Concrete	27.89 c.y.
" No. 54	Class "S" Concrete	597.78 c.y.
" No. 55	Reinforcing Steel	153,247 lbs.
" No. 68	Precast Concrete Piling	3040 lin. ft.
" No. 69	Rip Rap	56 c.y.
" No. 74	Concrete Railing	1089 lin. ft.
S.P.	Repairing Existing Structure	- lump sum.

Note:--Reconstruction of Existing Bridge, Sta. 538+27.4 to 543+86, to be Non Participating in Federal Aid.

Overall length of Bridge 1099'-1/4"



Note: Existing Bridge built by Stupp Bros. in 1909. No evidence of settlement of foundations. Capacity as repaired - 5 Ton Truck without impact.

General Notes

Cost of galvanized iron scuppers to be included in price bid for Treated Timber.

Repairing Existing Structure shall be paid for at the lump sum bid, which shall include all labor, materials, equipment and expense incident to Redecking and Widening 22' span adjoining New Trestle, and raising the approach spans, except such items as are specifically included to be paid for, as Class "A" concrete, Reinforcing Steel, Contractor to maintain traffic during construction.

Specifications: Arkansas Standard Road and Bridge Specifications, adopted May 30, 1925, and Revised with Spec. Provs.

Drainage Area - 500 sq. mi., Mountingous.

LAYOUT (SHEET 1 OF 2)

BRIDGE OVER CADDO RIVER

CLARK COUNTY

ROUTE 51 SEC. 2

ARKANSAS STATE HIGHWAY COMMISSION

LITTLE ROCK, ARK.

Drawn By: G.E.V. Date: 5-8-30

Traced By: M.O.G. Date: 5-11-30

Checked By: G.E.V. Date: 5-17-30

BRIDGE NO. 8792

DRAWING NO. 1976

Scale: 1 in. = 20 ft.

Concrete for building up pedestals to be Class "A". Price bid for Class "A" concrete to include cost of cutting off tops of existing pedestals, cost of any excavation required in cutting off and building up pedestals, and cost of drilling holes and placing dowels.

All Reinforcing Steel to be paid for at the unit price bid for this item.

D.M. Elev. 208.28
Top of Concrete, East
Caisson, North pier,
Caddo River Bridge

Test Hole #1

Test Hole #2

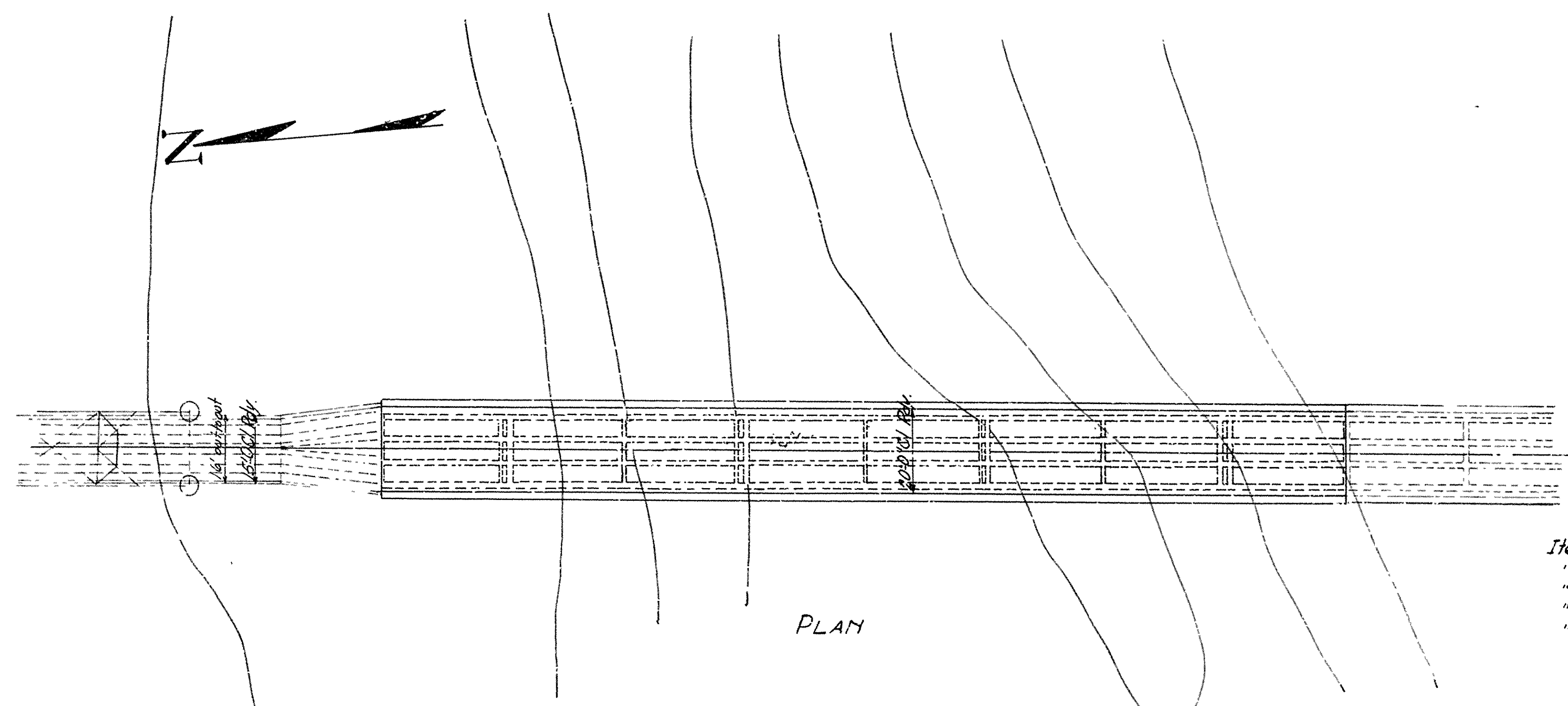
See 1976-A

FISCAL YEAR	Job No.	SHEET NO.	TOTAL SHEETS
1930	3126	2	6

271A 1930 2 6

406

CADDO RIVER



PLAN

QUANTITIES FOR ADDITIONS FOR F.A.P. 271-A.

Item No. 54	Class "S" Concrete	265 cu. yds.
" "	55 Reinforcing Steel	66,000 lbs.
" "	68 Concrete Piling	1280 lin. ft.
" "	74 Concrete Handrail	480 lin. ft.

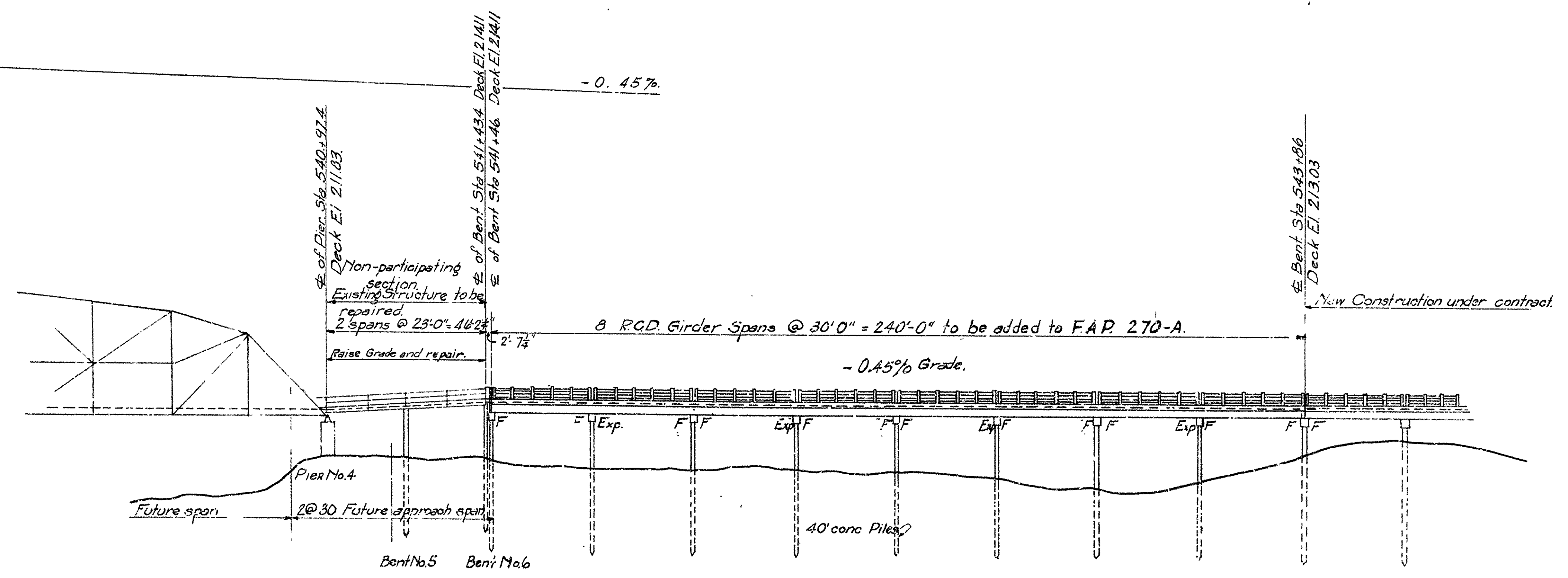
Note: R.R.W. 40'-0" Each side \pm from Sta. 540 +00 To Sta. 552 +00.

P.I. Sta. 539 +84.5
Elev. 214.84

+10%

200 VC.

-0.45%



ELEVATION

B.M. El. 208.28
Top of concrete, East
Caisson, North Pier
Caddo River Bridge.

For Layout showing previous
work on this bridge see
Dwg. No. 1996 & 1997.

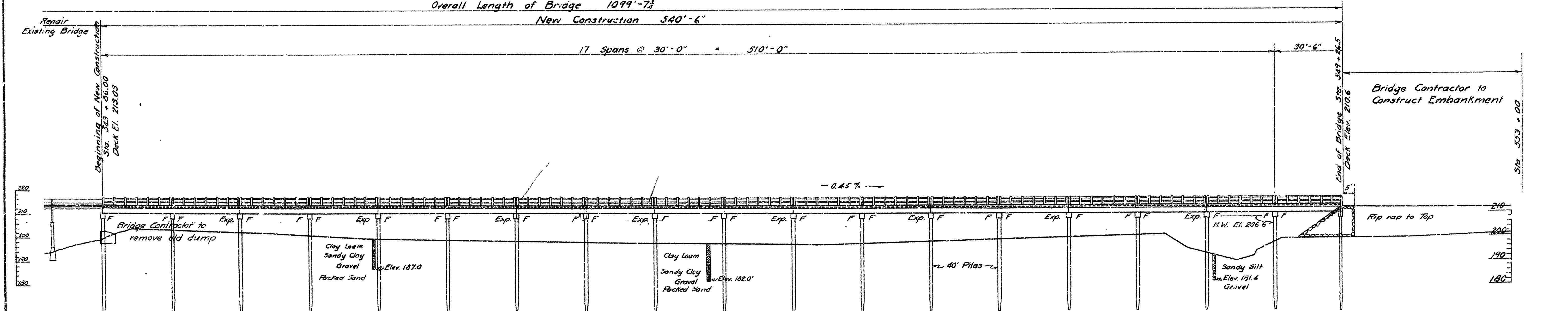
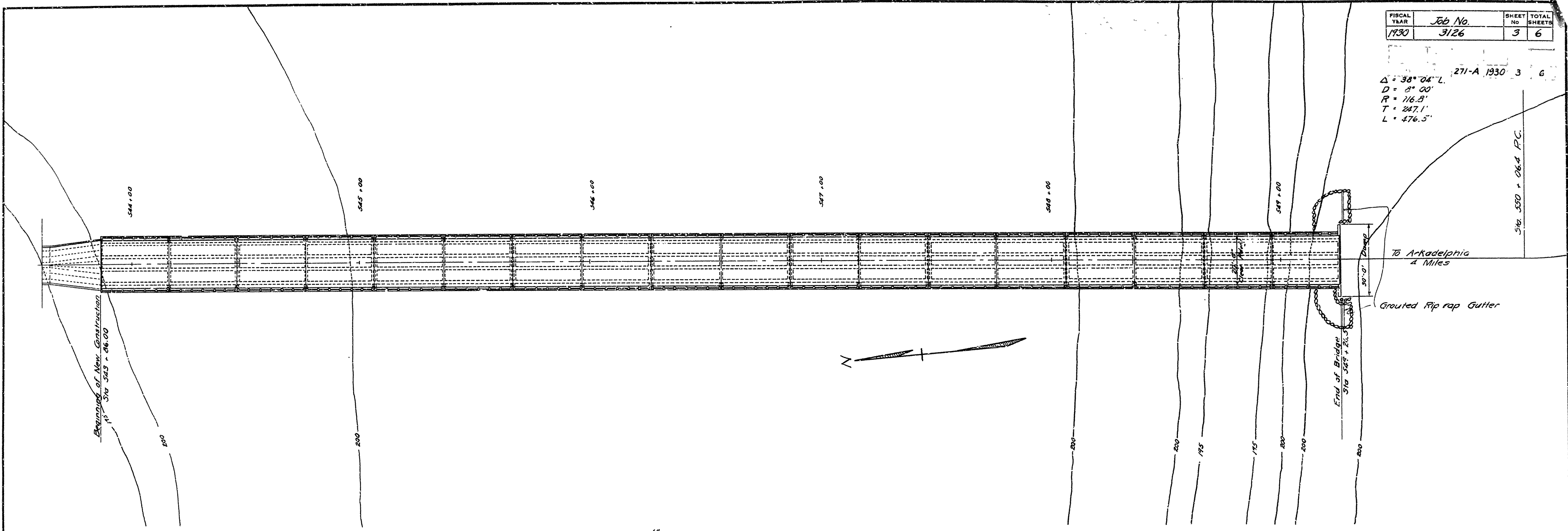
Note: This sheet to replace
Drawing No. 1996.

LAYOUT
BRIDGE OVER CADDO RIVER
CLARK COUNTY
ROUTE 51 SEC. 2
ARKANSAS STATE HIGHWAY COMMISSION
LITTLE ROCK, ARK.
Drawn By: LS Date: 2-26-30
Traced By: 271A Date: 2-2-30
Checked By: _____ Date: _____
Scale: 1 in. = 20 ft.
BRIDGE NO. 8992 DRAWING NO. 1996A

BRIDGE ENGINEER

FISCAL YEAR	Job No.	SHEET No.	TOTAL SHEETS
1930	3126	3	6

271-A 1930 3 6
 $\Delta = 38^{\circ} 04' L$
 $D = 8^{\circ} 00'$
 $R = 116.8'$
 $T = 247.1'$
 $L = 476.5'$



General Notes

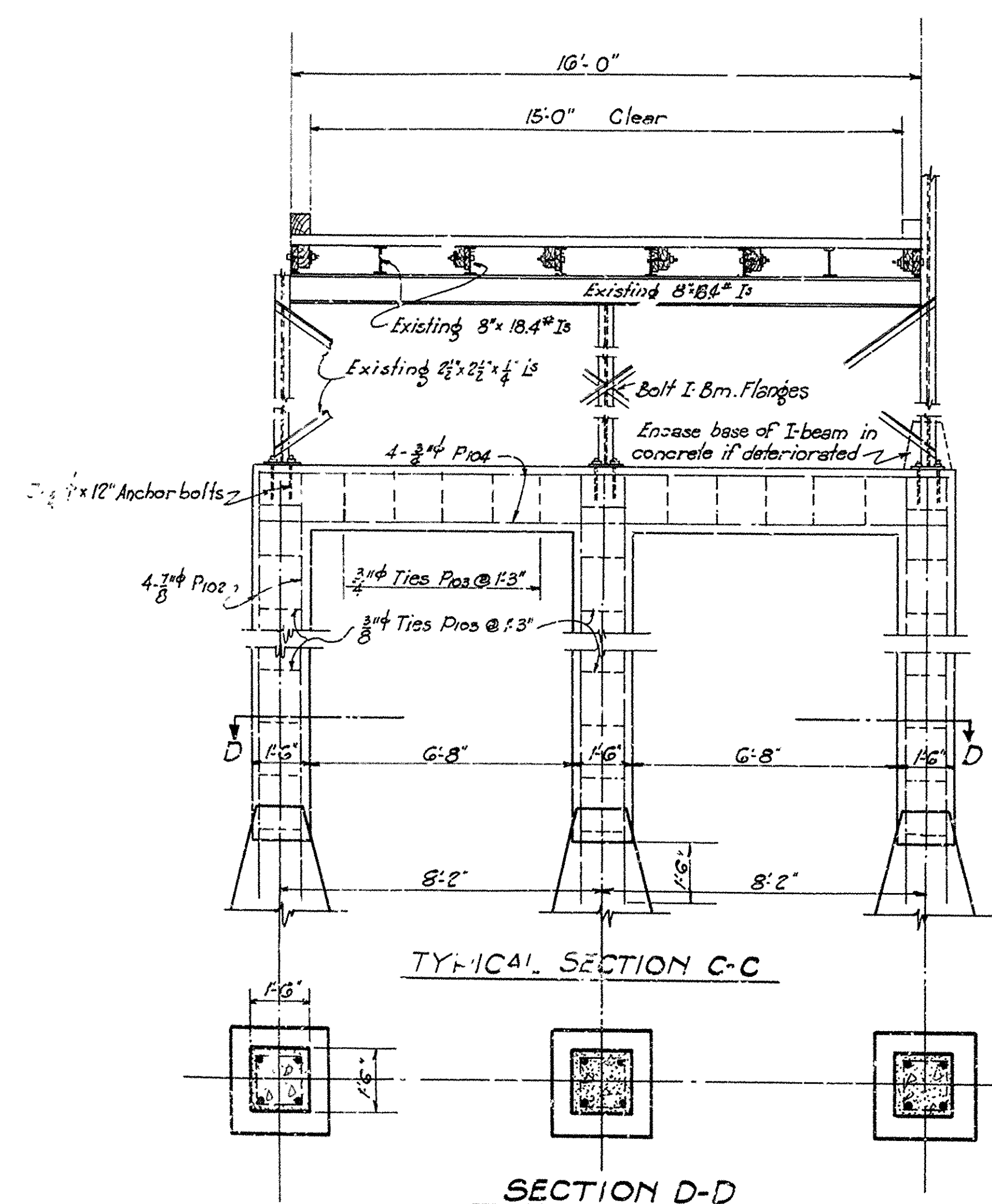
All exposed corners to have $\frac{3}{4}$ " chamfer unless otherwise noted.
 Precast concrete handrails to be 1:1:2 Mix, maximum aggregate $\frac{3}{8}$ ".
 All concrete in concrete pile trestle except handrails to be Class "S".
 Reinforcing bars to be deformed bars of Structural or Intermediate grade.
 Shop lists and bending diagrams must be submitted by the contractor before fabrication is begun.
 Expansion Devices and Cast Iron Drains to be paid for at Unit Price bid for Reinforcing Steel.
 Specifications: Arkansas Standard Road and Bridge Specifications, adopted May 30, 1925, and revised with Special Provisions.
 Unit Stresses: fs 16,000 $\frac{1}{2}$ " ; fc 750 $\frac{1}{2}$ " n=15
 Loading H15

Note: Length of piles given is for estimating purposes only. Actual length to be determined in the field.

For Notes in regard to repair of existing structure see Drwg. No. 1996
 For Details of Concrete Pile Trestle see Drwg. No. 2273
 For Details of Repairs to Existing Bridge see Drwg. No. 1998

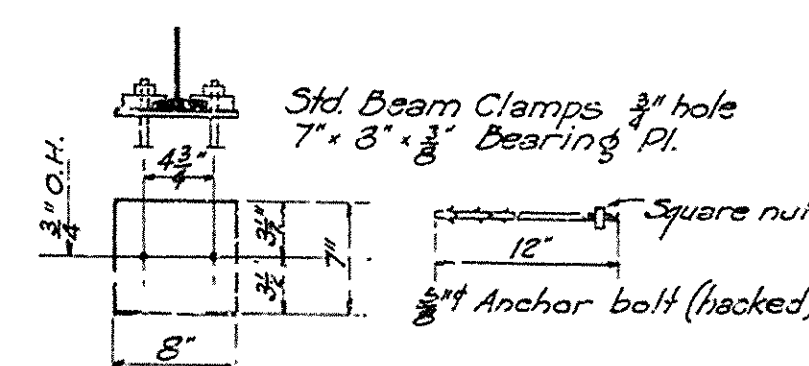
LAYOUT (SHEET 2 OF 2)
 BRIDGE OVER CADDO RIVER
 CLARK COUNTY
 ROUTE 51 SEC. 2
 ARKANSAS STATE HIGHWAY COMMISSION
 LITTLE ROCK, ARK.
 Drawn By: G.S.V. Date: 2-1-30
 Traced By: M.G.G. Date: 2-12-30
 Checked By: G.S.V. Date: 2-17-30
 BRIDGE NO. 899 $\frac{1}{2}$
 Scale: 1 in. = 20 ft.
 DRAWING NO. 1997

M.B. Sauer
 BRIDGE ENGINEER

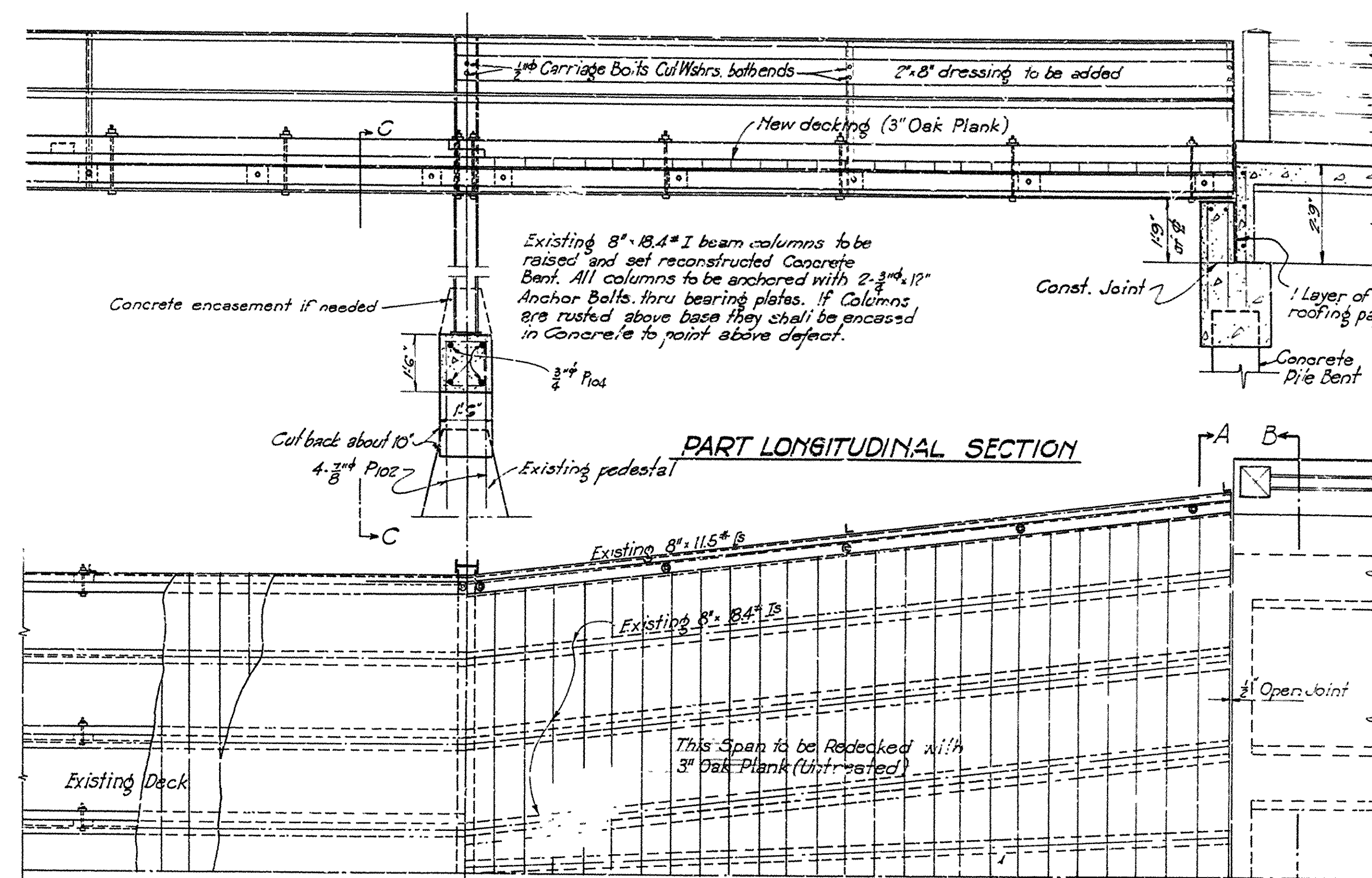


GENERAL NOTES:

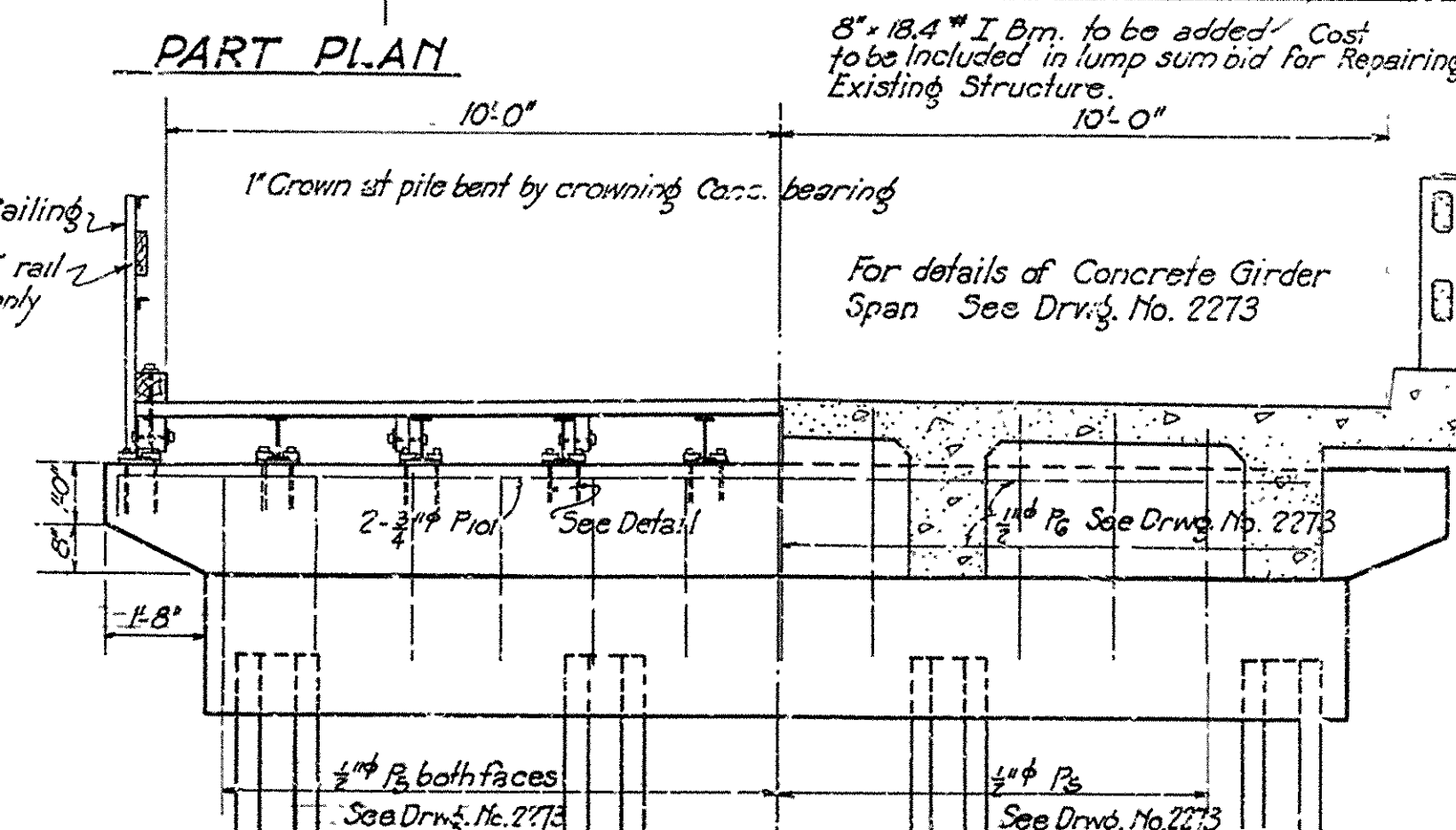
Concrete for building up pedestals to be Class 'A'. Price bid for Class 'A' concrete to include cost of cutting off tops of existing pedestals, cost of any excavation required in cutting off and building up pedestals and cost of drilling holes and placing dowels.
All reinforcing steel to be paid for at the Unit Price bid for this item.
Specifications: Arkansas Standard Road and Bridge Specifications adopted May 30, 1925 and Revised - with Special Provisions.



DETAILS OF BEARING PLATES ON CONCRETE PILE BENT



PART PLAN



HALF SECTION A-A

HALF SECTION B-B

DETAILS FOR
RAISING & REDECKING OLD SPANS
CADDO RIVER BRIDGE
CLARK COUNTY
ROUTE 51 SEC. 2

ARKANSAS STATE HIGHWAY COMMISSION
LITTLE ROCK, ARK.

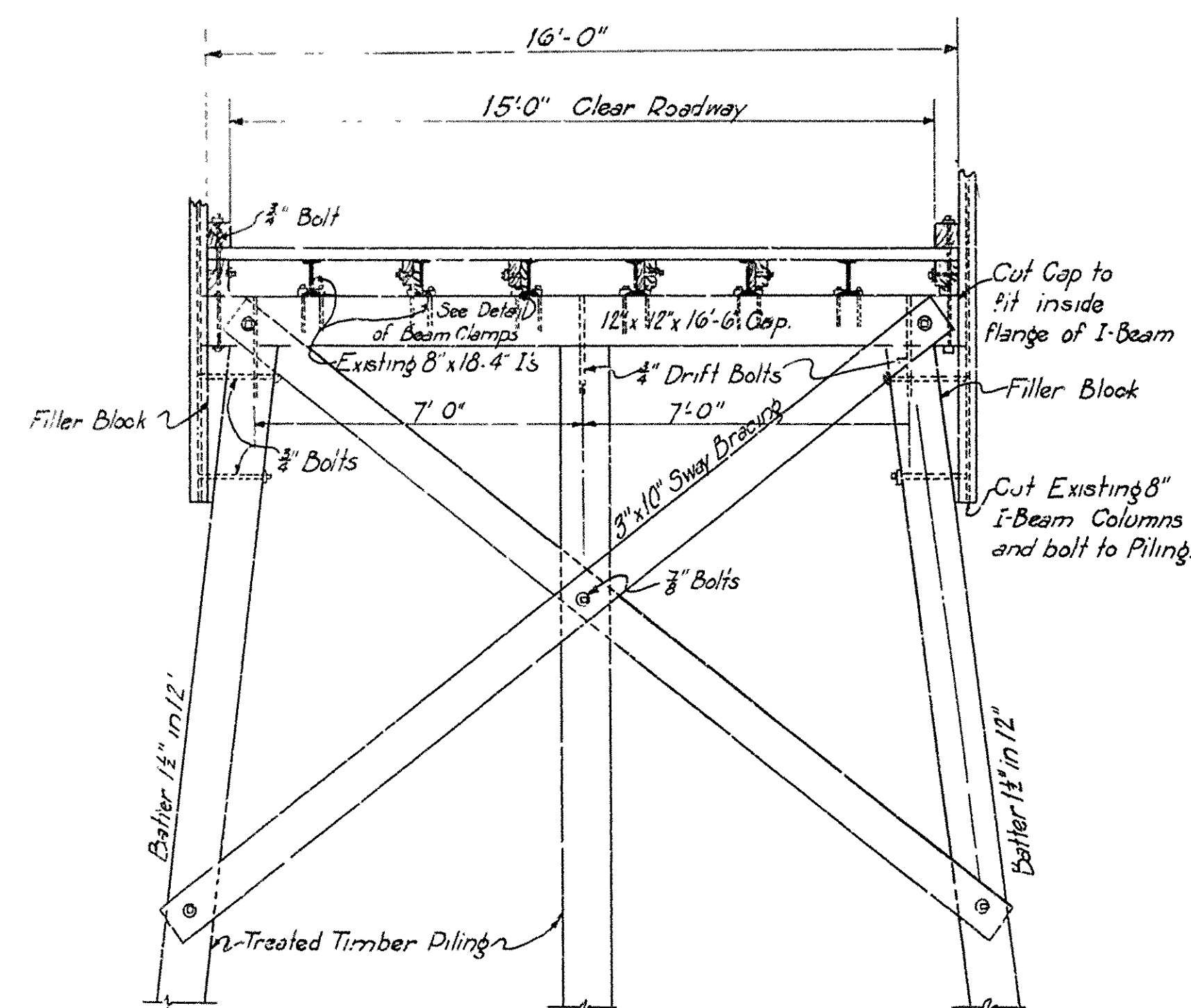
Drawn By: GSV Date: 3-11-30
Traced By: EMM Date: 4-25-30
Checked By: Date:

Scale: 3/8" = 1' ft

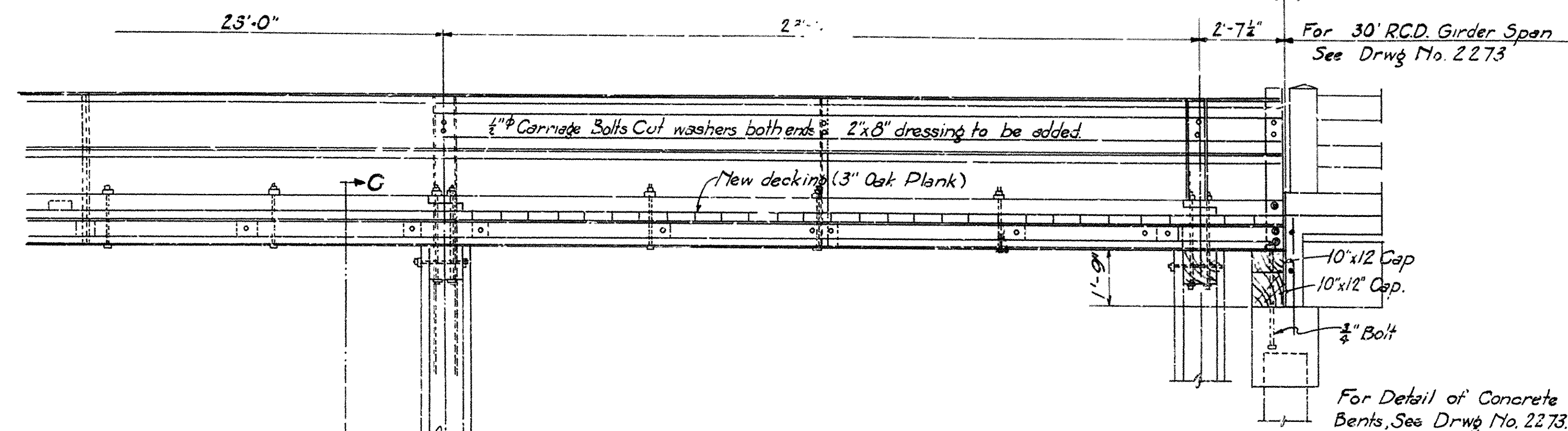
BRIDGE ENGINEER

BRIDGE No. 899 1/2

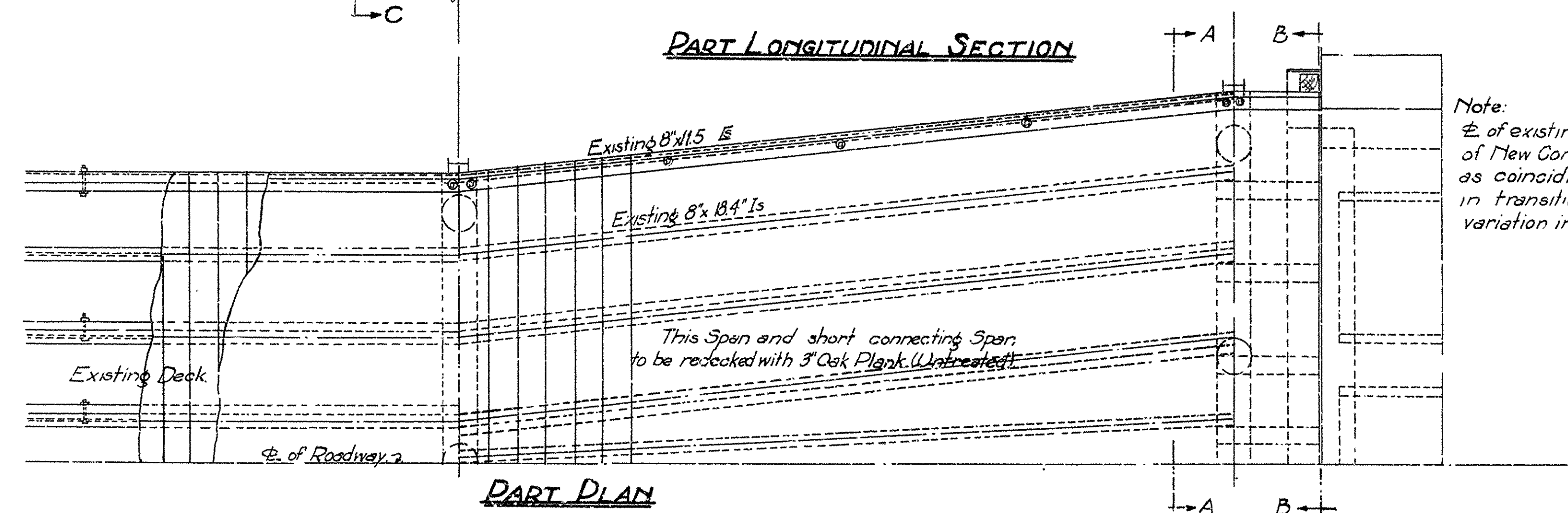
DRAWING No. 1998



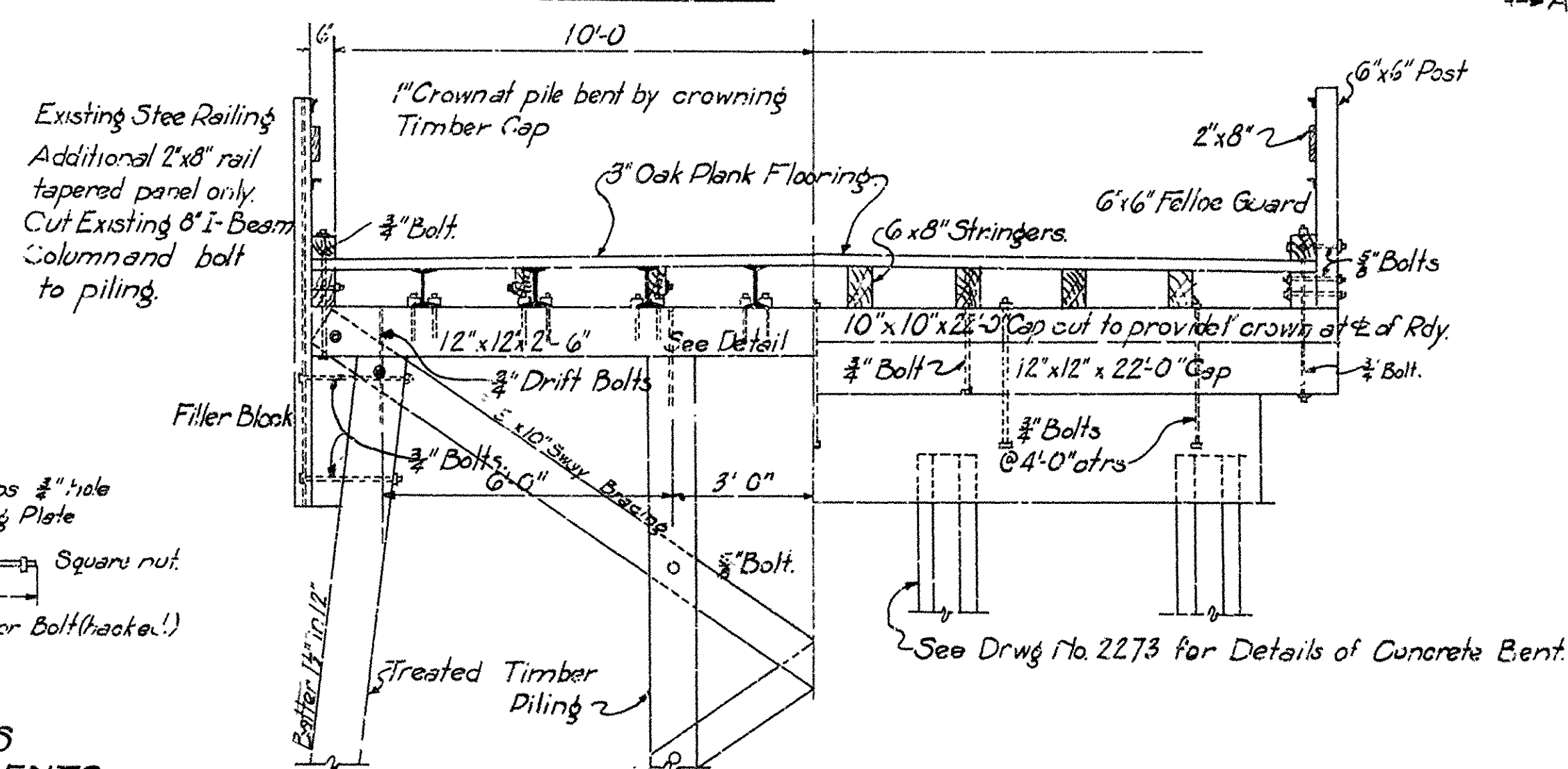
TYPICAL SECTION C-C



PART LONGITUDINAL SECTION

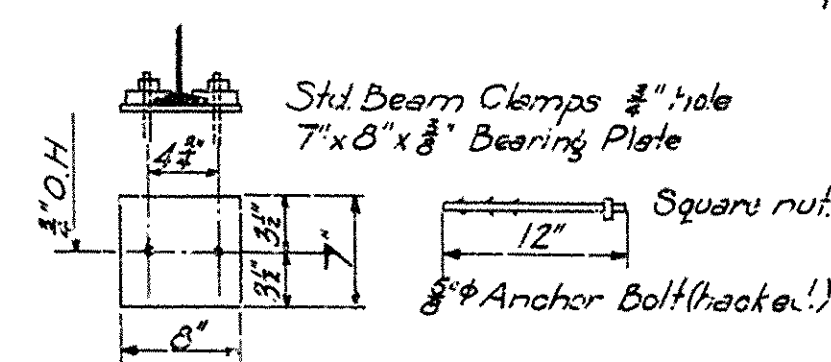


PART PLAN



HALE SECTION A-A

HALF SECTION B-B



DETAILS OF
BEARING PLATES
ON TIMBER PILE BENTS.

GENERAL NOTES:

All Timber Construction to be in accordance with Standard Timber Trestle construction of the Arkansas State Highway Department.

Specifications: Arkansas Standard Road and Bridge Specifications
Adopted May 30, 1925 and revised.

Note: This sheet to replace
Drawing No. 1998.

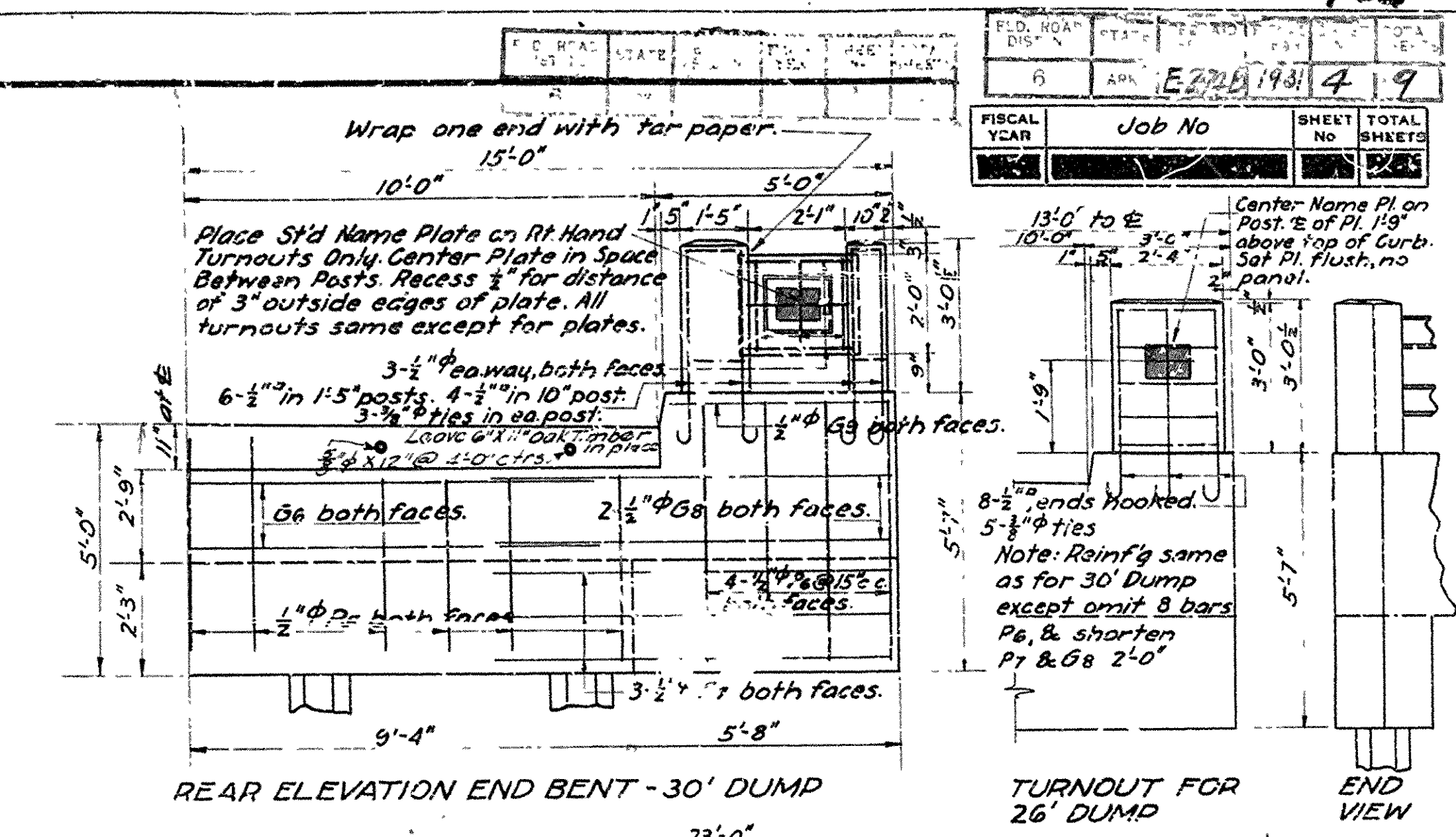
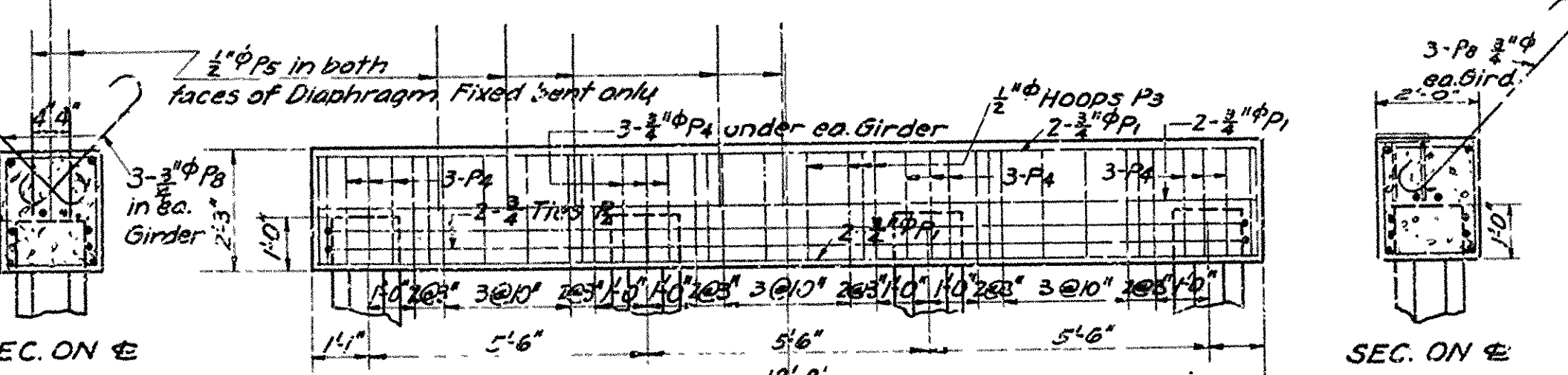
DETAILS FOR
RECONSTRUCTION OF EXISTING I-BEAM SPAN
CADDO RIVER BRIDGE
CLARK COUNTY.
ROUTE 51 SEC. 2

ARKANSAS STATE HIGHWAY COMMISSION
LITTLE ROCK, ARK.

Drawn By: HB Date: _____
Traced By: FMM Date: 10-21-30
Checked By: _____ Date: _____

Checked By: _____ Date: _____
BRIDGE NO. 899½ DRAWING NO. 1998-A

BRIDGE ENGINEER

[illegible]

PILE DIMENSIONS & REINF'G

L	D	d	P	Hart Bars	Spiral
4' 0 3/4"	16"	8"	9"	8-#3 @ 12"	#4 wire
36 7/8"	16"	8"	9"	8-#3 @ 12"	#4 wire

Other notes from drawing:
 - 10' dimension across top.
 - 10' dimension along right side.
 - "C/S" indicates for #4 Rebar.
 - Top Plate 1/2" above bridge engineer's mark.

BENT **HALF ELEVATION EXP BENT**

holes
3/8" bolts
4/8" bolts

General Notes

All exposed corners to have $\frac{3}{4}"$ chamfer unless otherwise noted.

Precast concrete handrail to be 1:1:2 mix. Max aggregate is $\frac{3}{8}"$.

All concrete, except handrail, to be Class "S".

Reinforcing steel to be deformed bars of structural or intermediate grade.

Shop list and bending diagrams must be submitted by Contractor before fabrication is begun.

Roadway drains and expansion devices to be paid for at unit price bid for reinforcing steel.

Specifications: Arkansas Standard Road & Bridge Specifications, adopted May 30, 1925 and revised.

Unit Strasses: $f_s = 16,000 \frac{lb}{sq. in.}$, $f_c = 750 \frac{lb}{sq. in.}$, $n = 15$

Loading 1115

Class 4-30-30 by Noe

DETAIL OF
STANDARD 30' R.C.D. GIRDER
4 GIRDER TYPE-4 PILE BENT
20 0 CLEAR ROADWAY

ARKANSAS STATE HIGHWAY COMMISSION
LITTLE ROCK, ARK.

Drawn By: SAK Date: 3-7-30
 Traced By: SR Date: 3-12-30
 Checked By: _____ Date: _____
 Scale: As noted.
 BRIDGE NO. _____ DRAWING NO. 2273